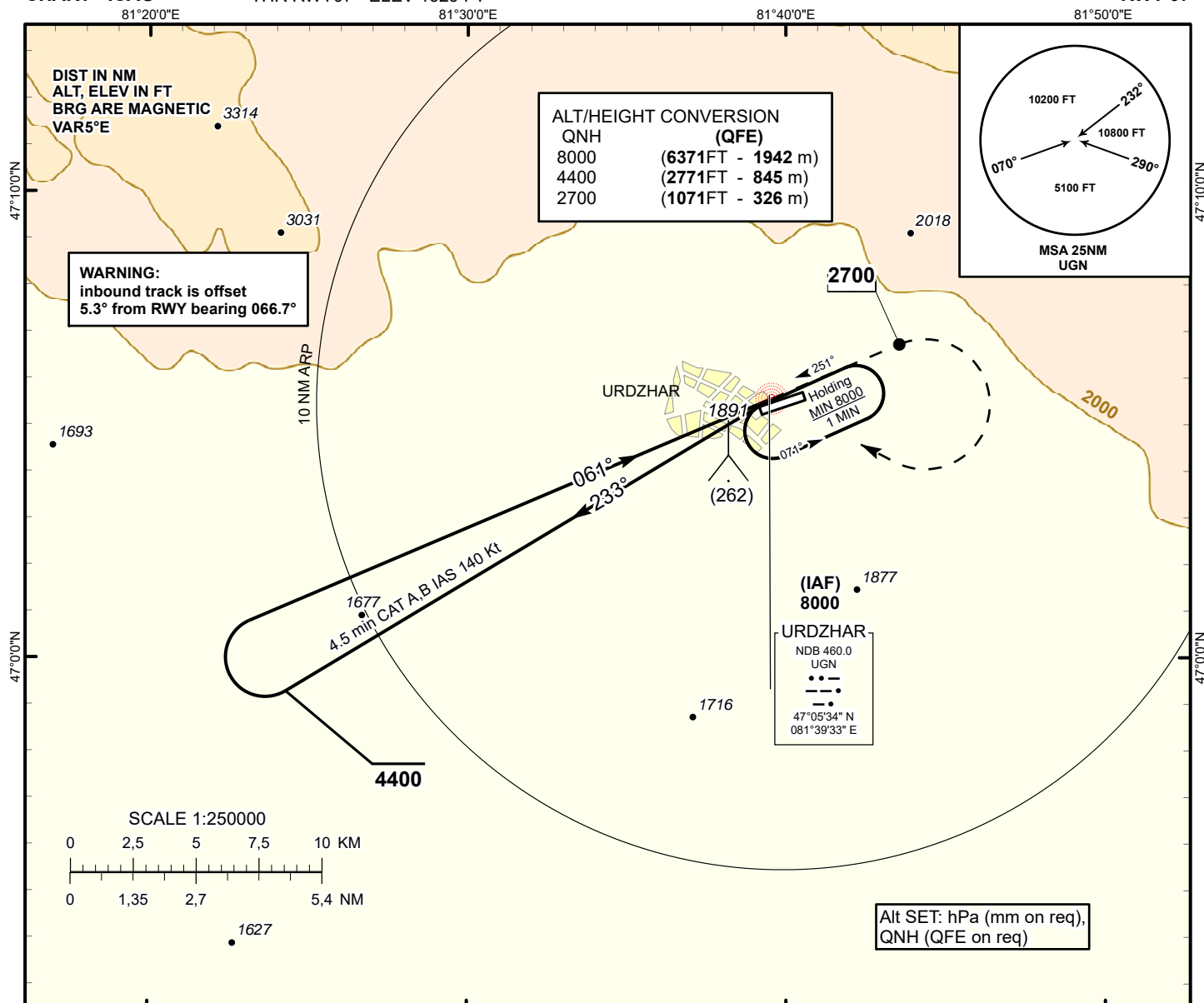


INSTRUMENT
APPROACH
CHART - ICAO

AERODROME ELEV 1702 FT
HEIGHTS RELATED TO
THR RWY07 - ELEV 1629 FT

URDZHAR TOWER 123.0

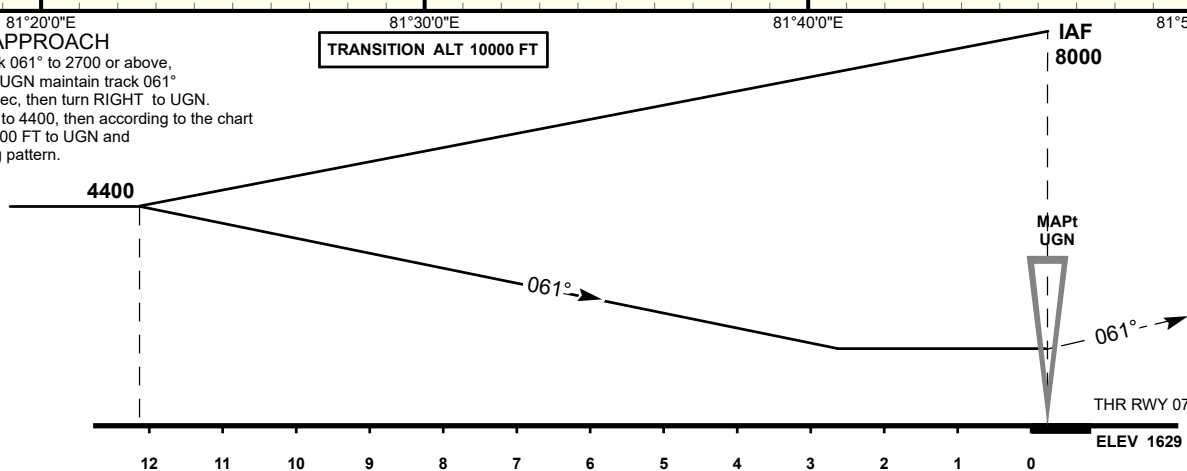
URDZHAR
NDB
RWY 07



MISSED APPROACH

Climb on track 061° to 2700 or above,
after passing UGN maintain track 061°
for 1 min 20 sec, then turn RIGHT to UGN.
Climb initially to 4400, then according to the chart
or climb to 8000 FT to UGN and
join to holding pattern.

TRANSITION ALT 10000 FT



Aircraft Category		A	B		
Straight-in Approach OCA/H	NDB	2310(680)	2310(680)		
Aerodrome Operating Minima MDH ft x RVR (CMV)	NDB				

CHANGE: Recalc.

URDZHAR (UASU)
NDB RWY07

AERONAUTICAL DATA TABULATION

NDB approach to RWY07 from NDB UGN	
Fix/point	Coordinates
UGN NDB	47°05'34.2" N 081°39'32.8" E
THR RWY 07	47° 05' 20.2"N 081° 39' 19.0"E